

250th  
Anniversary Series



# The Perfect Morn

Limited Edition Series

By DALE GLASGOW

We all remember a time when everything in our lives was peaceful. This new painting by Dale Glasgow, *The Perfect Morn*, personifies those memories—a large tree sheltering a young man fishing by the James River on a golden summer day.

The time period of the painting is the early frontier days of Lynchburg when Lynch's ferry began in the 1750s. In view is the ferry that is crossing the river with settlers on their way from eastern Virginia to Ohio's new lands. Call to reserve your prints for this limited time (540) 286-2539.

*Dale Glasgow*



540 ~ 286 ~ 2539

[WWW.DALEGLASGOW.COM](http://WWW.DALEGLASGOW.COM)

CALL FOR PRINT SALES & SIGNINGS

540-286-2539  
DALEGLASGOW.COM

# The Perfect Morn

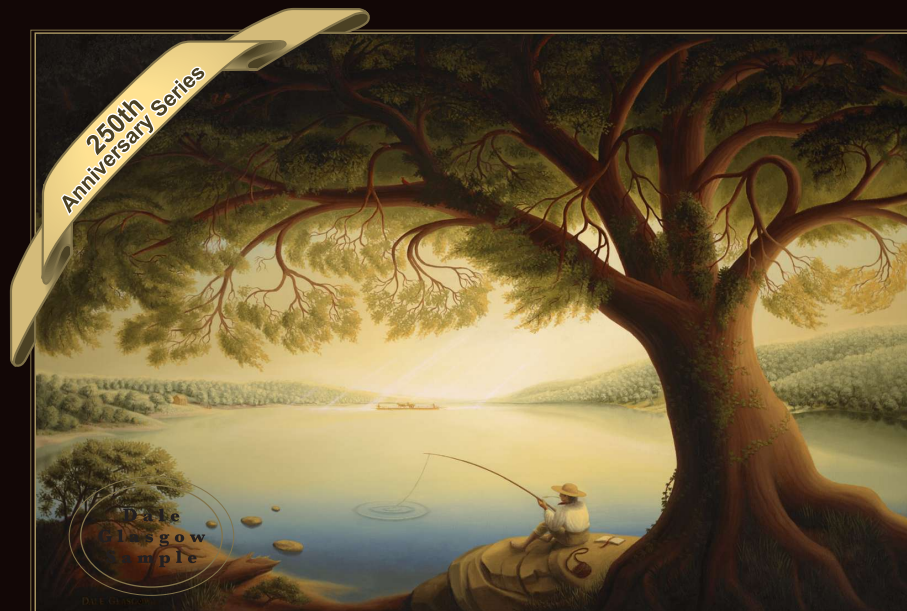
Limited Edition Series  
BY DALE GLASGOW

CALL FOR PRINT  
SALES & SIGNINGS



*Remarques available*

Dale Dennis Glasgow was interested in art from an early age of 3. “Being an artist everyday, has been my passion” says Dale. Experience in working at *National Geographic* magazine, and many Fortune 500 companies has developed his skill for artistic detail. His five daughters and wife of 25+ years -- live in Hartwood, Virginia.



## The Perfect Morn Lynch's Ferry

**Giclee Canvas full-size\***  
10 signed/numbered, \$575  
2 S/N, artist proofs, \$1500  
36 x 24 image size  
40 x 28 overall size  
unstretched

**Giclee Canvas Large\***  
10 signed/numbered, \$375  
2 S/N, artist proofs, \$750  
27 x 18 image size  
31 x 22 overall size  
unstretched

**Giclee Fine Art Paper  
Medium\***  
100 S/N, \$95  
5 S/N, artist proofs, \$150  
18 x 12 image size  
20 x 15 overall size

**Giclee Fine Art Paper  
Small\***  
200, S/N, \$25  
7.5 x 5.5 image size  
8.5 x 11 overall size

*\*Shipping & Handling Additional*